

SFD-1 Second Floor French Door with Transom #1:

SFD-1

Both doors swing into the room

Cellular Linen Shade-(stores at the bottom, travels to the top)

Chrome hardware - (unless nickle is available)

Traditional Grill

Tempered glass

Right door (viewed from inside) is **primary** door

Keys for **both** French door to be the **same**

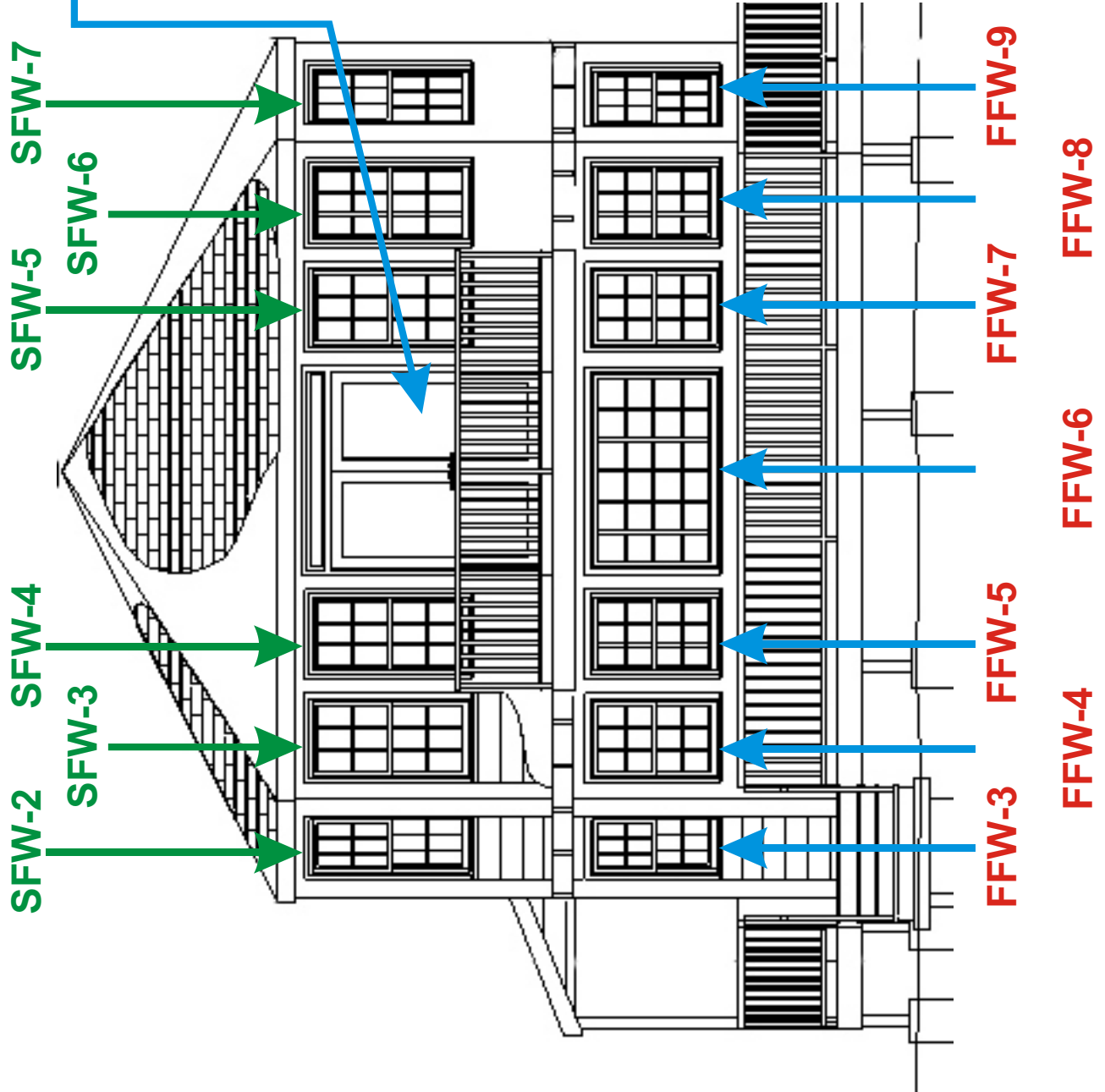
Aluminum Hinge screen - *offer alternatives, if available*

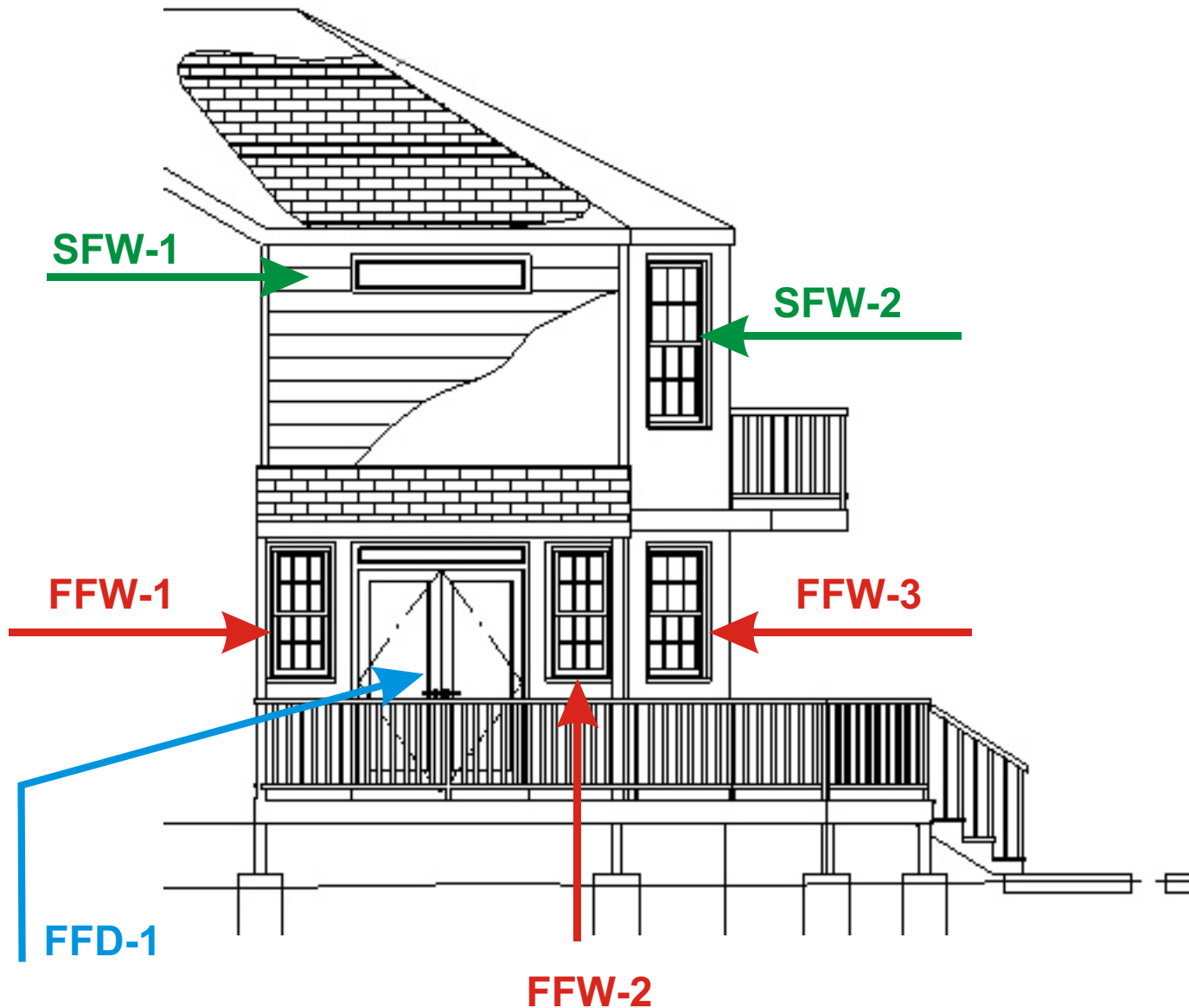
Rough opening: 72"W x 91-5/8"T

Door frame size: 71-1/4"W x 80-1/8"T (will enlarge to accommodate)

Transom frame size: 71-1/4"W x **12**"T

Total Door frame size: 71-1/4"W x 92-1/8"T





FFD-1 First Floor French Door with Transom #1:

Both doors swing into the room

Cellular Linen Shade-(stores at the bottom, travels to the top)

Chrome hardware - (unless *nickle* is available)

Traditional Grill

Tempered glass

Right door (viewed from outside) is **primary** door

Keys for ***both*** French door to be the ***same***

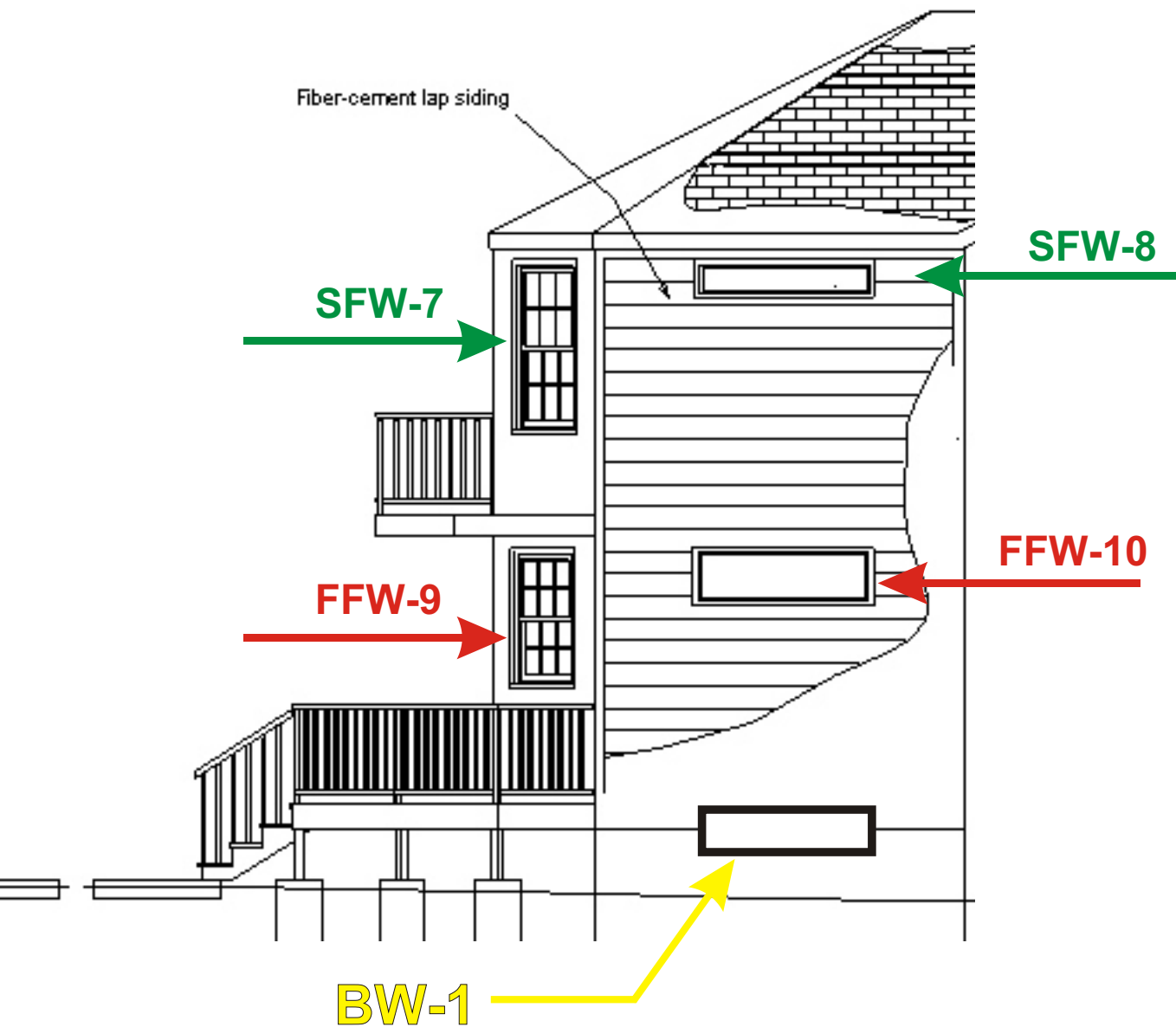
Aluminum Hinge screen - *offer alternatives, if available*

Rough opening: 60-1/4"W x 90 5/8"T

Door frame size: 59-1/4"W x 80-1/8"T

Transom frame size: 59-1/4"W x 12"T

Total Door frame size: 59-1/4"W x 92-1/8"T



BW-1 Basement Window #1:
 Fixed Frame
 Cellular Linen Shade-(stores at the bottom, travels to the top)
 Nickle hardware
 Traditional Grill
 Tempered Glass
 Rough opening: 60"W x 12"T
 Window frame size: 59"W x 12"T

FFW-1 First Floor Window #1:
Casement-swings out to the right
Roll up screen
Cellular Linen Shade-(stores at the bottom, travels to the top)
Nickle hardware
Traditional Grill
Rough opening: 25-5/8"W x 48"T
Window frame size: 25"W x 47"T

FFW-2 First Floor Window #2:
Casement-swings out to the left
Roll up screen
Cellular Linen Shade-(stores at the bottom, travels to the top)
Nickle hardware
Traditional grill
Rough opening: 25-5/8"W x 48"T
Window frame size: 25"W x 47"T

FFW-3 First Floor Window #3:
Casement-swings out to the right
Roll up screen
Cellular Linen Shade-(stores at the bottom, travels to the top)
Nickle hardware
Traditional grill
Rough opening:33-1/2"W x 48"T
Window frame size: 33"W x47"T

FFW-4 First Floor Window #4:
Casement-swings out to the right
Roll up screen
Cellular Linen Shade-(stores at the bottom, travels to the top)
Nickle hardware
Traditional grill
Rough opening: 29-5/8"W x 48"T
Window frame size: 29:W x 47"T

FFW-5 First Floor Window #5:

Casement-swings out to the right

Roll up screen

Cellular Linen Shade-(stores at the bottom, travels to the top)

Nickle hardware

Traditional grill

Rough opening: 29-3/4"W x 48"T

Window frame size: 29"W x 47"T

FFW-6 First Floor Window #6:

Fixed Casement

Cellular Linen Shade-(stores at the bottom, travels to the top)

Nickle hardware

Traditional grill

Tempered glass (over stove, must be fixed and tempered)

Rough opening: 72"W x 48"T

Window frame size: 59"W x 47"T

FFW-7 First Floor Window #7:

Casement-swings out to the left

Roll up screen

Cellular Linen Shade-(stores at the bottom, travels to the top)

Nickle hardware

Traditional grill

Rough opening: 29-5/8"W x 48"T

Window frame size: 29"W x 47"

FFW-8 First Floor Window #8:

Casement-swings out to the left

Roll up screen

Cellular Linen Shade-(stores at the bottom, travels to the top)

Nickle hardware

Traditional grill

Rough opening: 29-5/8"W x 48"T

Window frame size: 29"W x 47"T

FFW-9 First Floor Window #9:

Casement-swings out to the left

Roll up screen

Cellular Linen Shade-(stores at the bottom, travels to the top)

Nickle hardware

Traditional grill

Tempered Glass (if necessary-window over kitchen sink)

Rough opening: 33-5/8"W x 48"T

Window frame size: 33"W x 47"T

FFW-10 First Floor Window #10:

Awning Window-swings up(handle on right, viewed from inside)

Roll up screen

Cellular Linen Shade-(stores at the bottom, travels to the top)

Nickle hardware

Traditional grill

Rough opening: 60"W x 17-3/4"T

Window frame size: 53"W x 17"T

SFW-1 Second Floor Window #1:

Awning Window-swings up (handle on right as viewed from inside)

Roll up screen

Cellular Linen Shade -(stores at the bottom, travels to the top)

Nickle hardware

Traditional Grill

Rough opening: Currently 60"W x 13-15/16"T (will enlarge to accommodate)

Window frame size: 53"W x 17"T

SFW-2 Second Floor Window #2:

Casement-swings out to the right

Roll up screen

Cellular Linen Shade-(stores at the bottom, travels to the top)

Nickle hardware

Traditional Grill

Rough opening: 33-1/2"W x 60"T

Window frame size: 33"W x 59"T

SFW-3 Second Floor Window #3:

Casement-swings out to the right

Roll up screen

Cellular Linen Shade-(stores at the bottom, travels to the top)

Nickle hardware

Traditional Grill

Rough opening: 29-5/8"W x 60"T

Window frame size: 29"W x 59"T

SFW-4 Second Floor Window #4:

Casement-swings out to the right

Roll up screen

Cellular Linen Shade-(stores at the bottom, travels to the top)

Nickle hardware

Traditional Grill

Rough opening: 29-3/4"W x 60"T

Window frame size: 29"W x 59"T

SFW-5 Second Floor Window #5:

Casement-swings out to the left

Roll up screen

Cellular Linen Shade-(stores at the bottom, travels to the top)

Nickle hardware

Traditional Grill

Tempered Glass (next to bathtub)

Rough opening: 29-5/8"W x 60"T

Window frame size: 29"W x 59"T

SFW-6 Second Floor Window #6:

Casement-swings out to the left

Roll up screen

Cellular Linen Shade-(stores at the bottom, travels to the top)

Nickle hardware

Traditional Grill

Tempered Glass (next to bathtub)

Rough opening: 29-5/8"W x 60"T

Window frame size: 29"W x 59"T

SFW-7 Second Floor Window #7:

Casement-swings out to the left

Roll up screen

Cellular Linen Shade-(stores at the bottom, travels to the top)

Nickle hardware

Traditional Grill

Tempered Glass (next to bathtub)

Rough opening: 33-5/8"W x 60"T

Window frame size: 33"W x 59"T

SFW-8 Second Floor Window #8:

Awning Window-swings up (handle on the right as viewed from inside)

Roll up screen

Cellular Linen Shade-(stores at the bottom, travels to the top)

Nickle hardware

Traditional Grill

Rough opening: Currently 60"W x 14"T (will enlarge to accommodate)

Window frame size: 53"W x 17"T